



Create a Workflow ▼

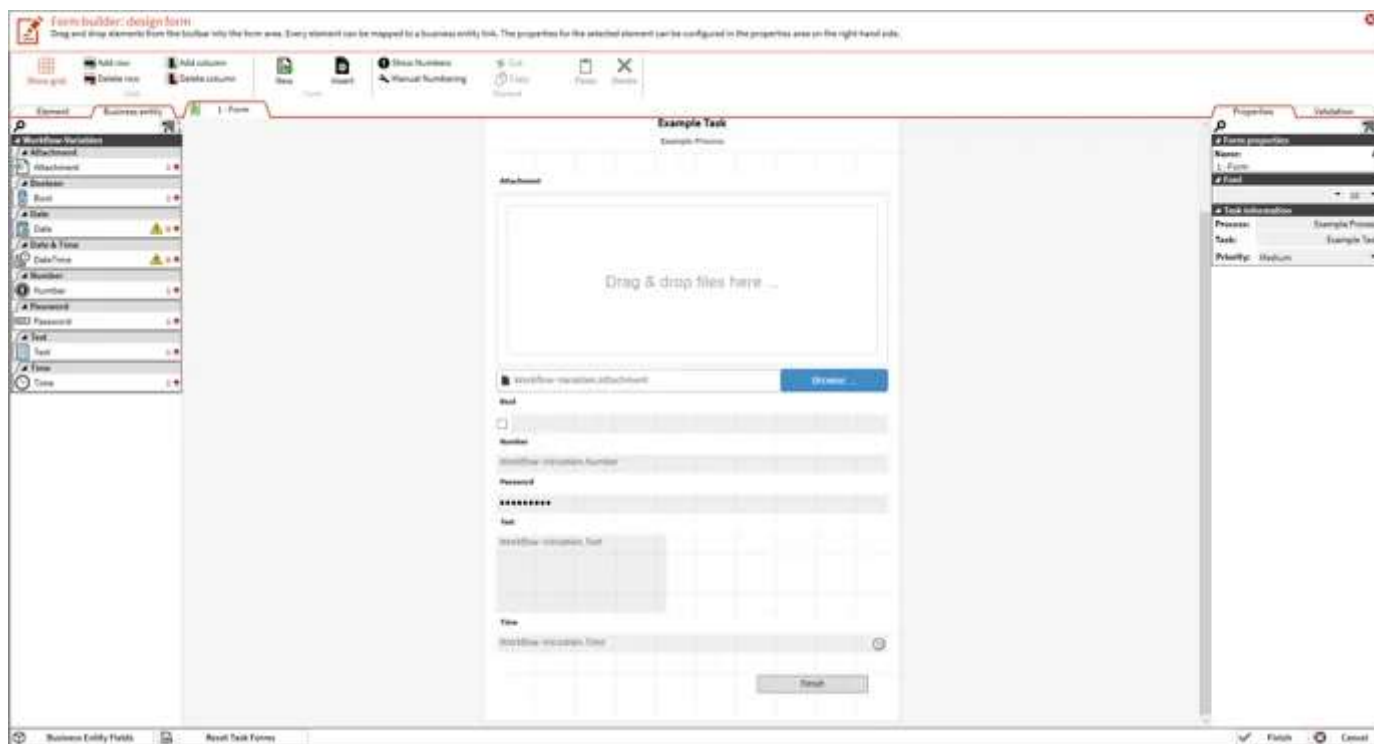


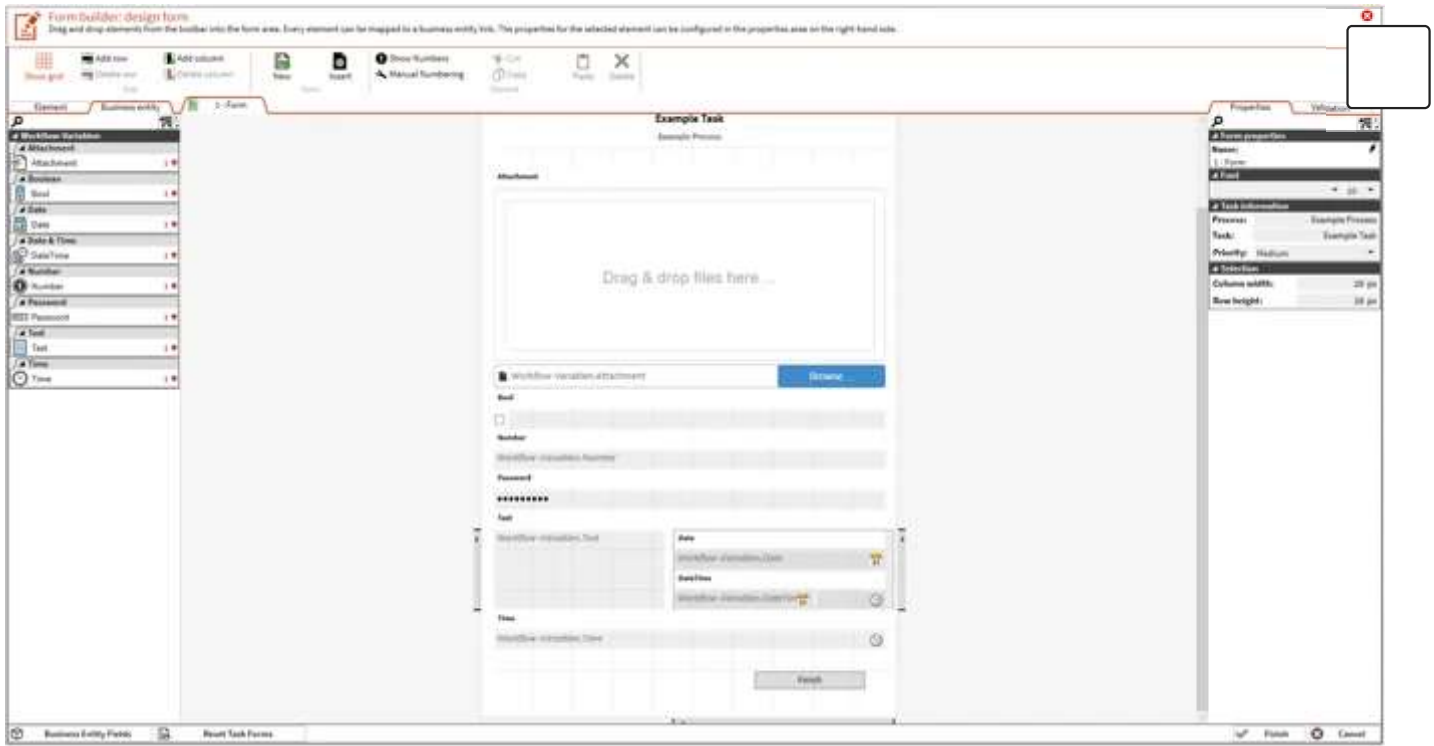
◀ Back to home

Autocomplete feature

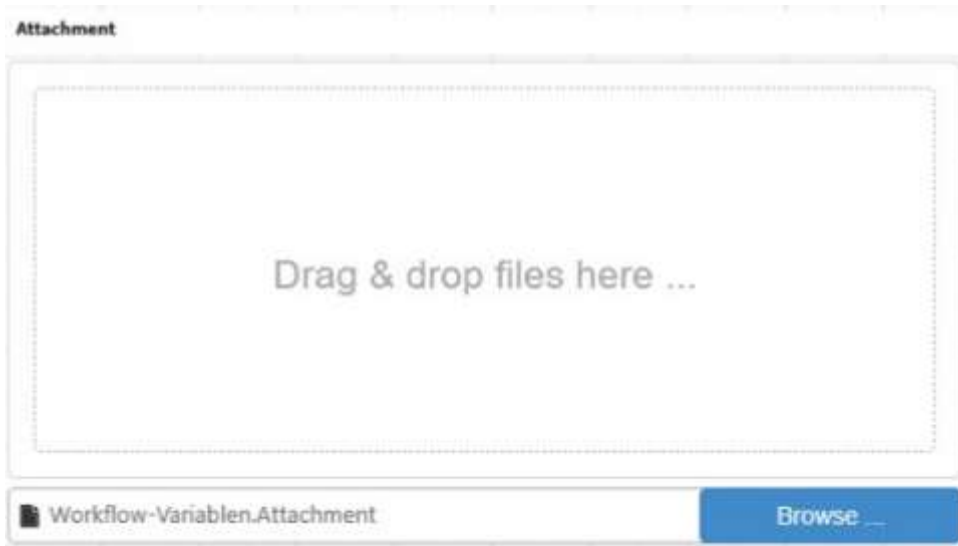
There are lots of new options for the autocomplete feature in the form builder.

By default, all unmapped fields are selected, but you can unselect some of them or even select fields that are already used in the form. If you don't select anything in the form it searches for the first appearance of two empty rows and takes the second one to insert all unmapped business entity fields with a label and its control based on the business entity field type.

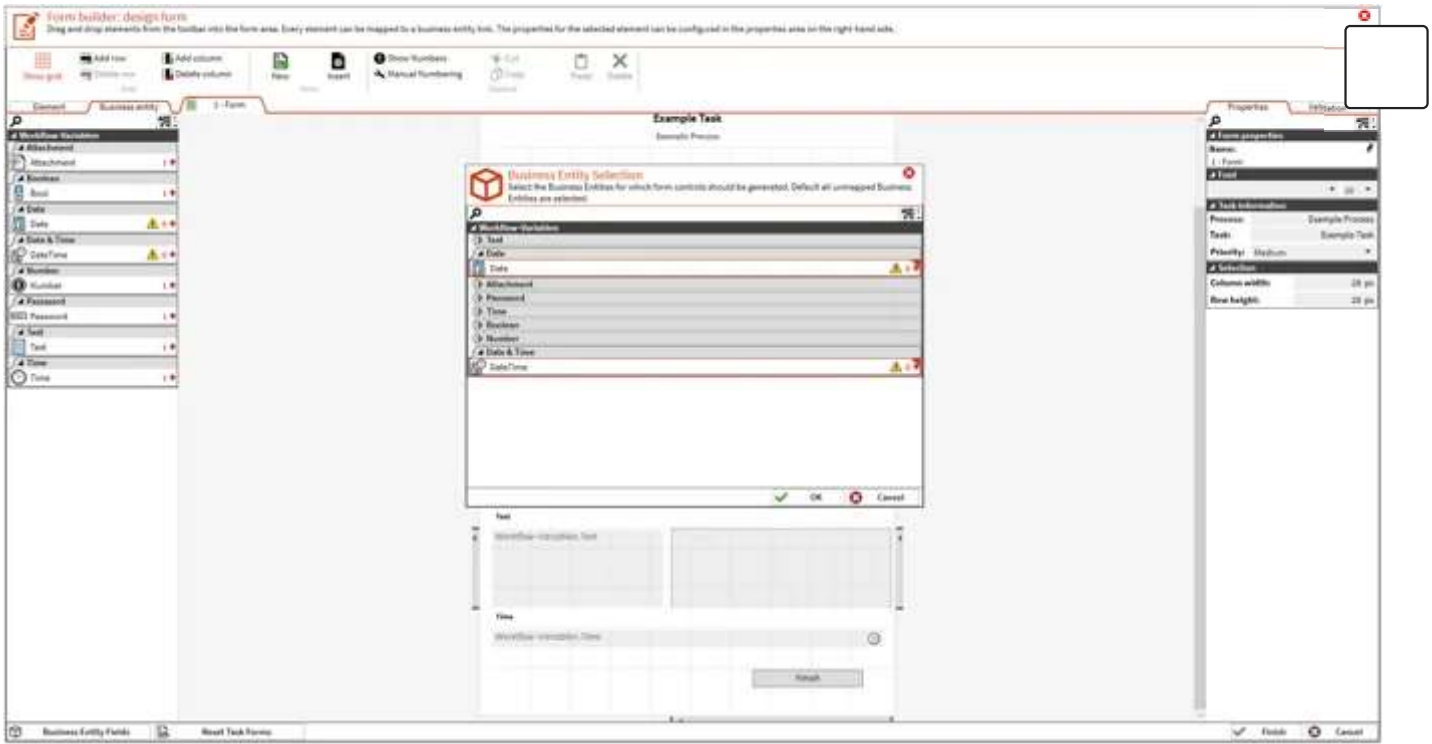




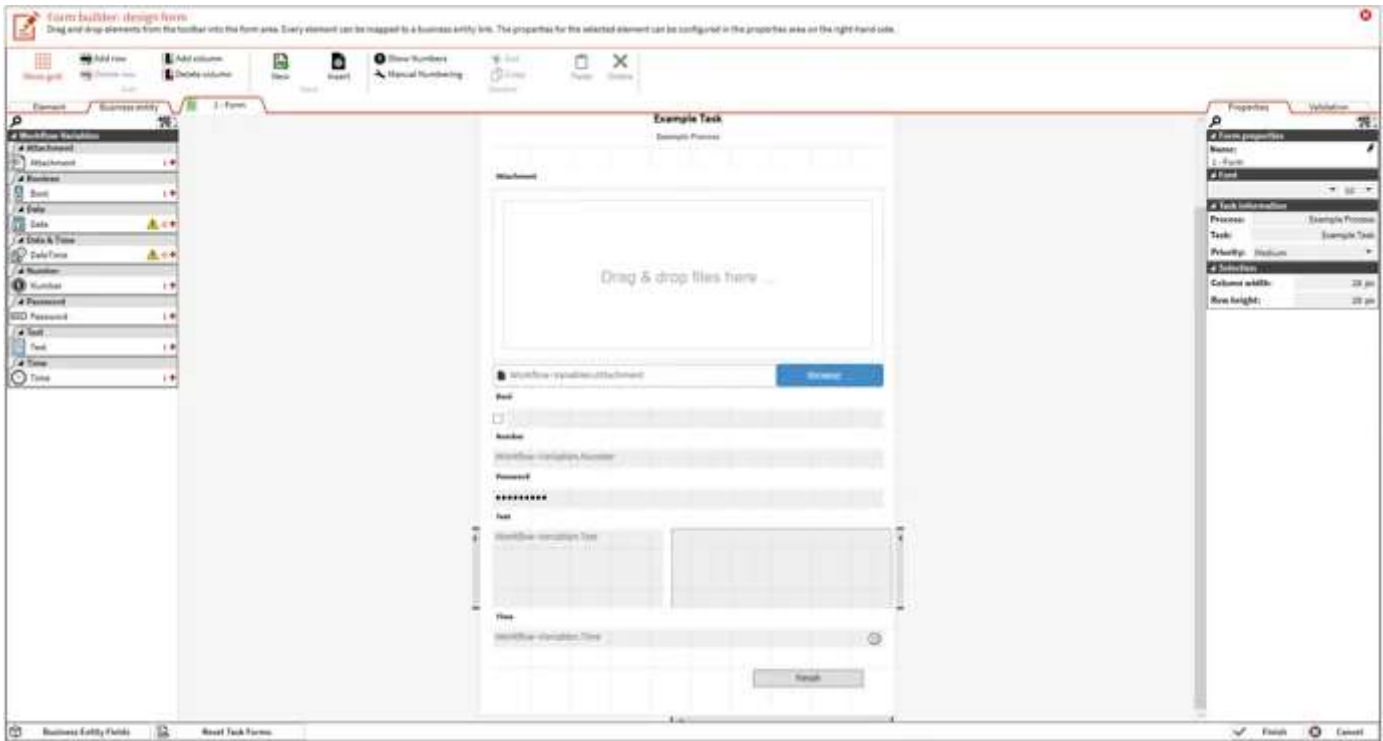
Attachment fields are now also supported and generated as a file picker control. To learn more about Attachments in task forms, see [Attachments](#).



Before the controls are generated you are presented with a small dialog where you can choose the business entities you want to generate.



If you select an area of the form and click on the **Insert** button in the ribbon, your selected fields are generated in this specific area.



If you have multiple empty rows in your selected area, they will be removed afterward.