



Create a Workflow ▼




◀ Back to home

Attachments

Attachment fields in FireStart are used to handle files during the workflow. Files can be down-/uploaded from/to attachment fields manually with the file picker control or automatically with various activities or custom check routines.

Creating Attachment Fields

Attachment fields can be added to both business entities and workflow variables. They are added like normal fields and the type has to be changed to **Attachment**.



Business entity definition

Here you can define the fields of this business entity which can be mapped with real data. Fields which are not mapped are workflow variables. Additionally, you can define views for complex data structures.

General / Fields

Name:

Workflow Variables

Description:

Fields:

Show configuration: Live ▼ Test data

🔍

Name	Type	Default value	Required	Read-only
All:				
Attachment Field	Attachment ▼		<input type="checkbox"/>	<input type="checkbox"/>

Text
Number
Date & Time
Boolean
Attachment
Password
Date
Time
Time (display ignores time zones)
Date (display ignores time zones)
Date & Time (display ignores time zones)

+ Add field

✕ Remove field

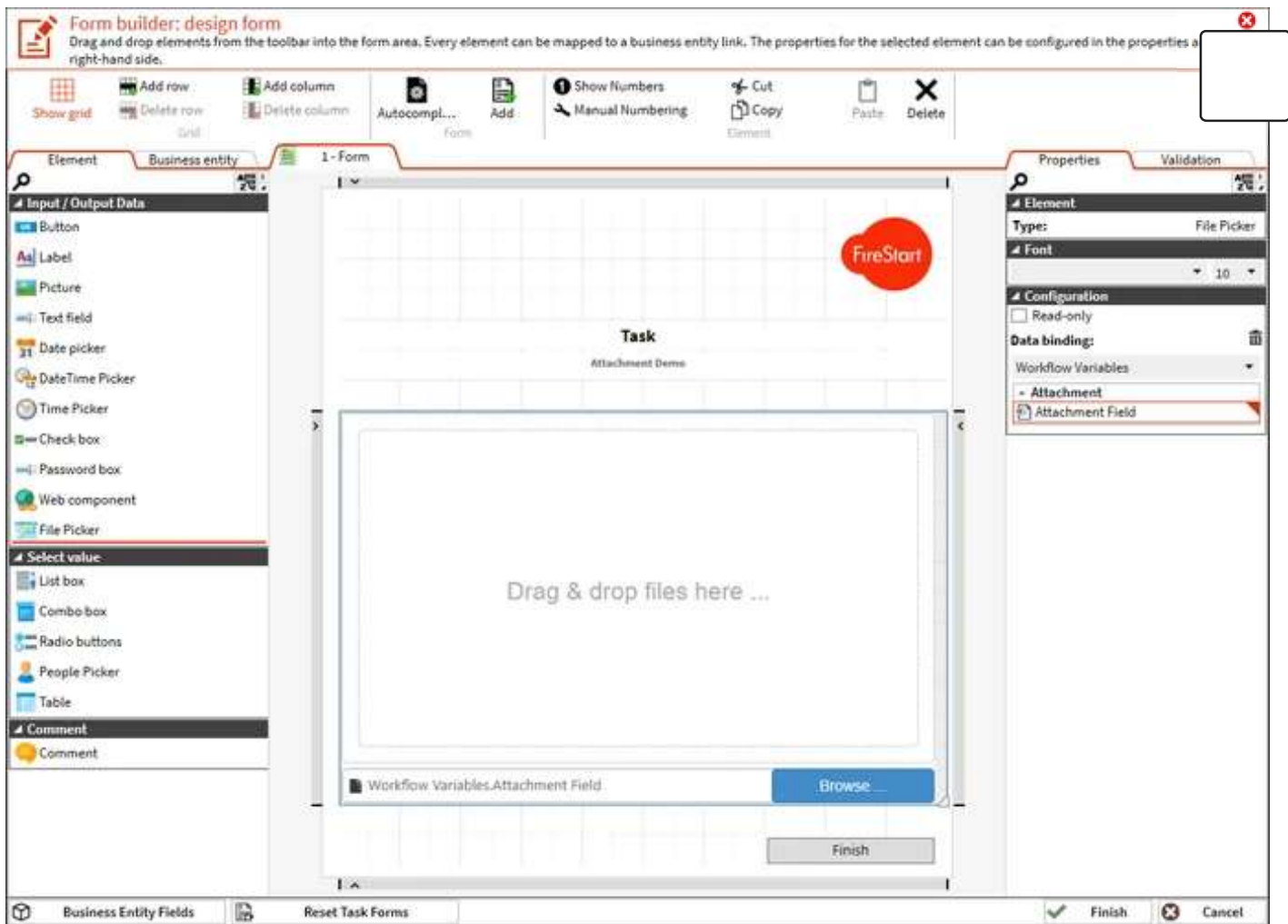
☐ Show system fields

✓ OK

✕ Cancel

File Picker Control in Tasks

With the file picker control, you can upload files to an attachment field. The attachment field the files are uploaded to has to be added to the task as output. The configuration of the file picker can be seen on the right side in the group **Configuration**.



Adding files works via the browse button or with drag & drop. If the attachment field already contains files, you can download these files, view them in a preview window or delete them.



Task

Attachment Demo

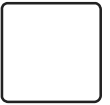
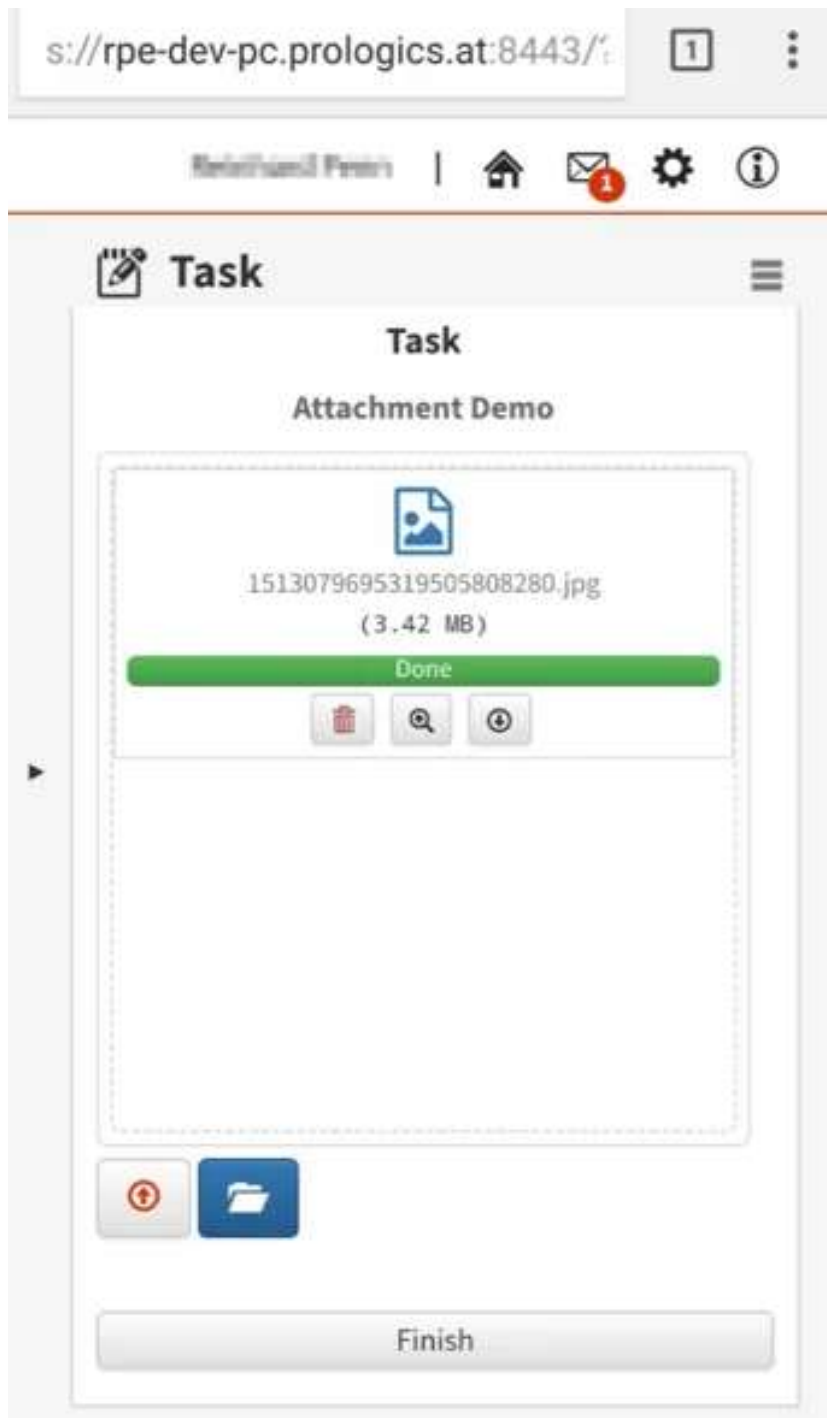
	Test 3.txt (23 B)	<div>Done</div>				
	Test 1.txt (23 B)	<div>Done</div>				
	Test 2.txt (23 B)	<div>Done</div>				

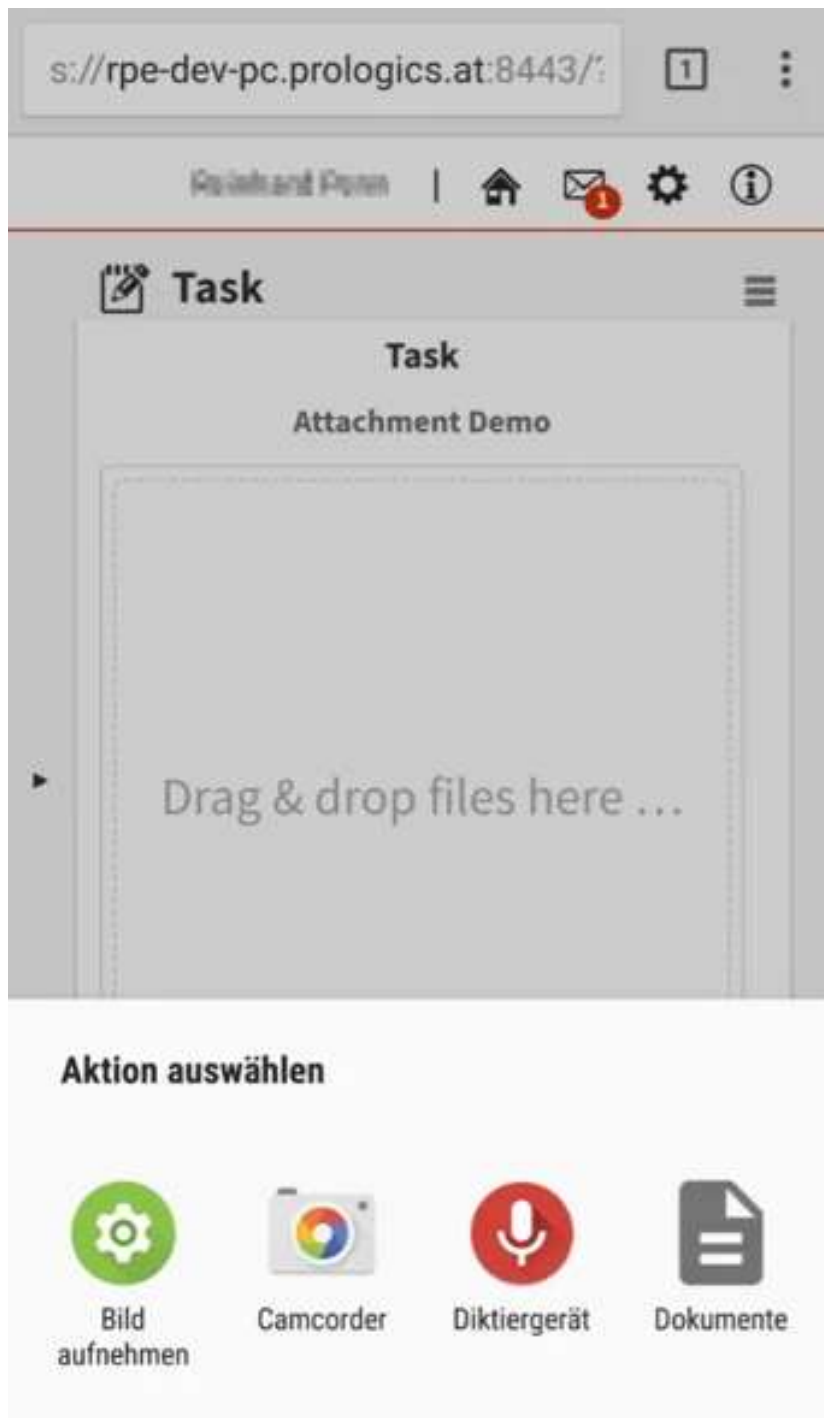
 Upload Browse ...

Finish

Mobile View

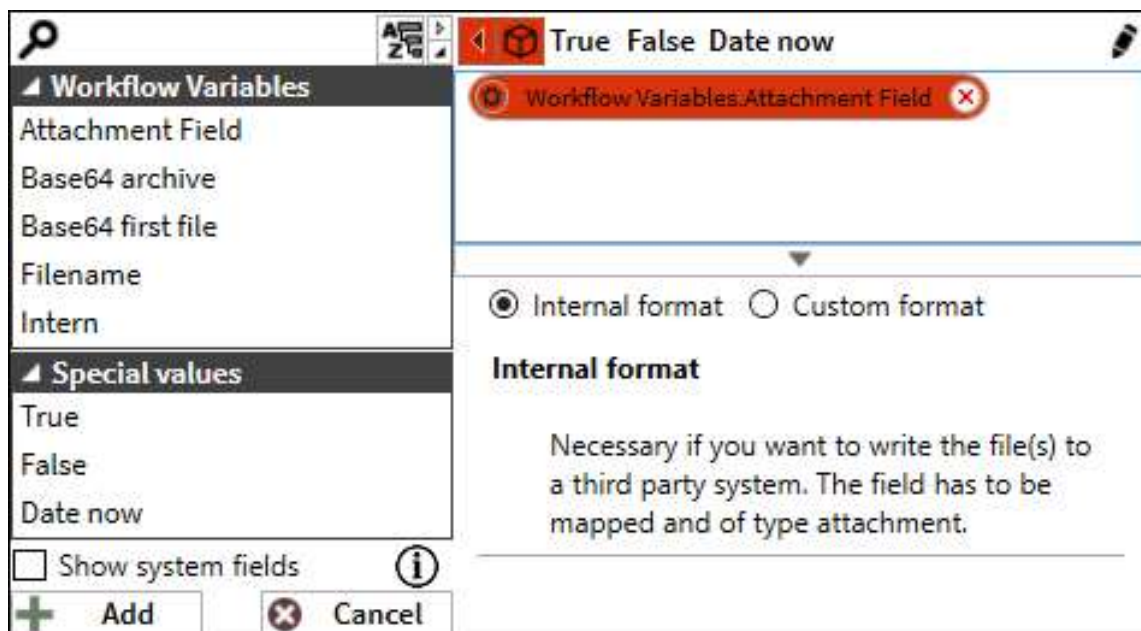
On a mobile device, you can select different options supported by the device. For example, take a picture or video, record audio or choose a file saved on the device.





Attachment Field Formatter

The attachment field formatter provides four different formats. The internal format and three custom ones.



Internal format

The internal format is used when no formatter is configured. It is used when writing attachment fields to other attachment fields.

Base64 string - Whole ZIP Archive

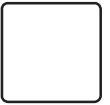
This formatter returns a base64 string representing all files in a zip archive.

Base64 string - First File

This formatter returns a base64 string representing the first file in the attachment field.


Filename


This formatter returns the filenames of the files in the attachment field. If the attachment field contains multiple files, the filenames are concatenated with a semicolon.



Business Entity Value View

If you click on the business entity or workflow variable during an execution you can view the current values. In the values of an attachment field, you can click on the different files in it and open them.

 Workflow Variables



Business entity values

Shows the current values of the selected business entity.

✕

▲ Workflow Variables

Attachment Field	Test 3.txt Test 1.txt Test 2.txt
Base64 archive	UEsDBBQAAAAIAPNqjEuiR2T5EgAAABcAAAAKAC
Base64 first file	VGZzdCBUZXRN0lFRlc3QNCmFzZGZzYWY=
BEITEM_ID	e9c5811d-5f74-4e43-9c38-f74daa99b498
BEITEM_TRACKING_ID	9665094c-b2e1-48f0-9f1e-8a6695494da4
EXECUTIONID	c5f101df-78ab-4f7d-a609-ffa89b6d6c86
EXECUTIONNAME	Attachment Demo
EXECUTIONSTART	2017-12-12T12:23:24.5576577Z
EXECUTIONSTARTED_BY	BQp...
Filename	Test 3.txt;Test 1.txt;Test 2.txt
Intern	a2d0c720-182e-4208-a5b2-05adc2941851
PROCESSOWNER_DISPLAYNAME	Bartolomeo F...
TEMPLATELANGUAGE_ID	1
TEMPLATENAME	Attachment Demo

✕ Close