

Basic GUI and Navigation ▼



◀ Back to home

# Responsible Persons

There are three different responsible persons available to be set for a model (depending on the model type):

- Model Owner
- Model Responsible
- Workflow Responsible

These can all be the same person and initially on model creation the user who created the model is set as **Model Owner** and **Workflow Responsible**.

**Note:** The Workflow Responsible can only be set for process models since this is the only model type where a workflow can be started.

You will see that the **Model Responsible** initially also shows the model creator this occurs because if no one is set, the **Model Owner** is taken as a fallback. **Model Owners** of previous models will be set as **Model Owner** and **Workflow Responsible** in new models after upgrading. So if you had *Person A* as **Model Owner** in a previous model, now after upgrading to version 2019.4 this *Person A* will be **Model Owner** and **Workflow Responsible**.



## General permissions and functional responsibility

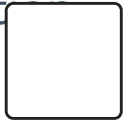
All three are able to open the model and in case of a process model are able to open and view running executions (workflows) of a model. They are all able to see supervisor tasks.

### Model Owner

The **Model Owner** is the owner of the model and usually has no responsibilities regarding modeling or execution. In an example, the **Model Owner** would be the head of a department or workgroup and the **Model Responsible** would be a member of that department or workgroup.

### Model Responsible

The **Model Responsible** is responsible for the implementation (modeling) and the content of a model.

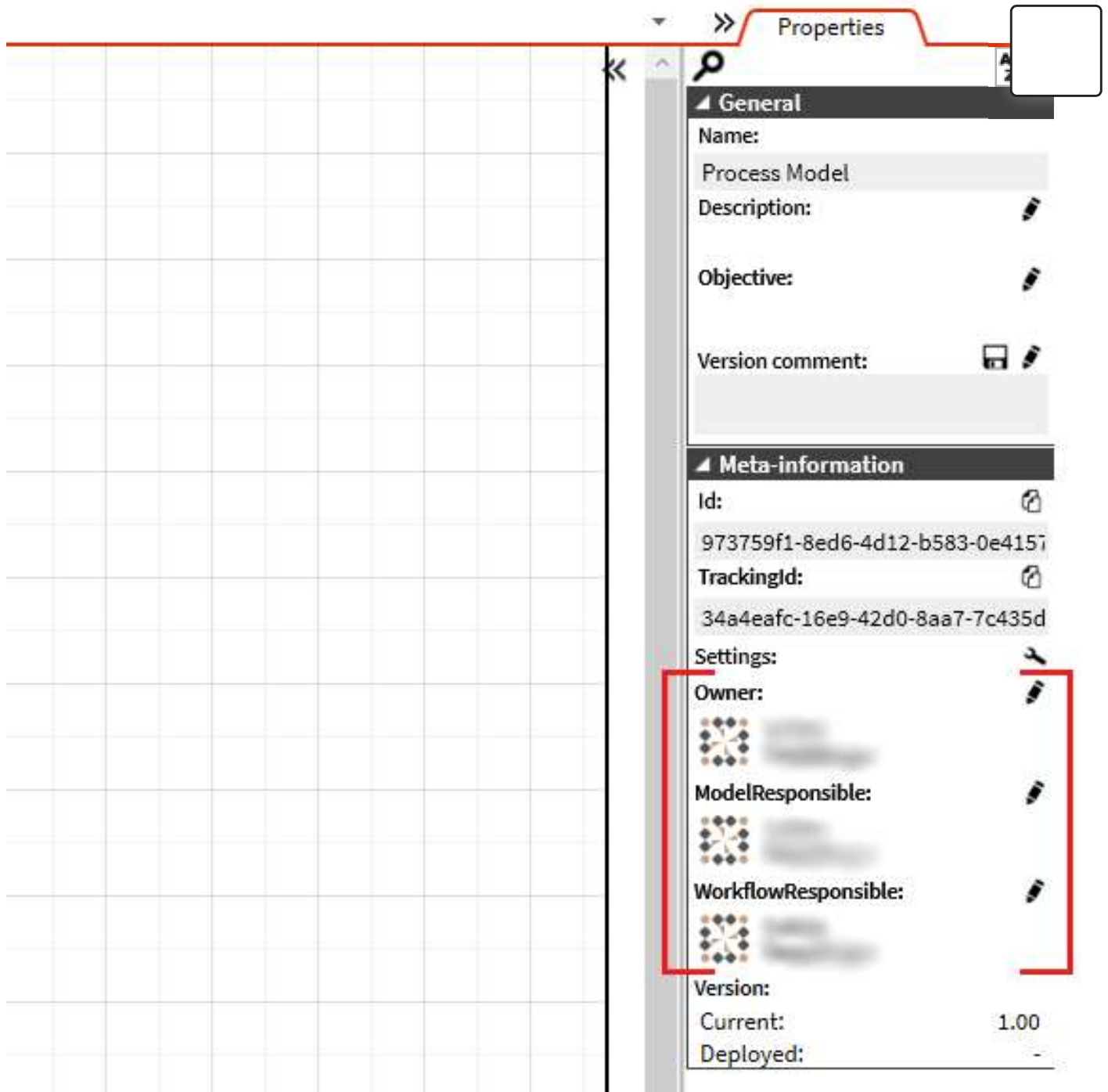


## Workflow Responsible

The **Workflow Responsible** is responsible for the model execution and therefore receives all user failed tasks and all activity failed tasks where no **User In charge** is set.

The **Workflow Responsible** usually is a person from the IT department.

They can all be changed individually either in the model **Meta-Information** section of the property panel:



**Properties**

**General**

Name:

Process Model

Description:

Objective:

Version comment:

**Meta-information**

Id:

973759f1-8ed6-4d12-b583-0e4157

TrackingId:

34a4eafc-16e9-42d0-8aa7-7c435d

Settings:

Owner:

ModelResponsible:

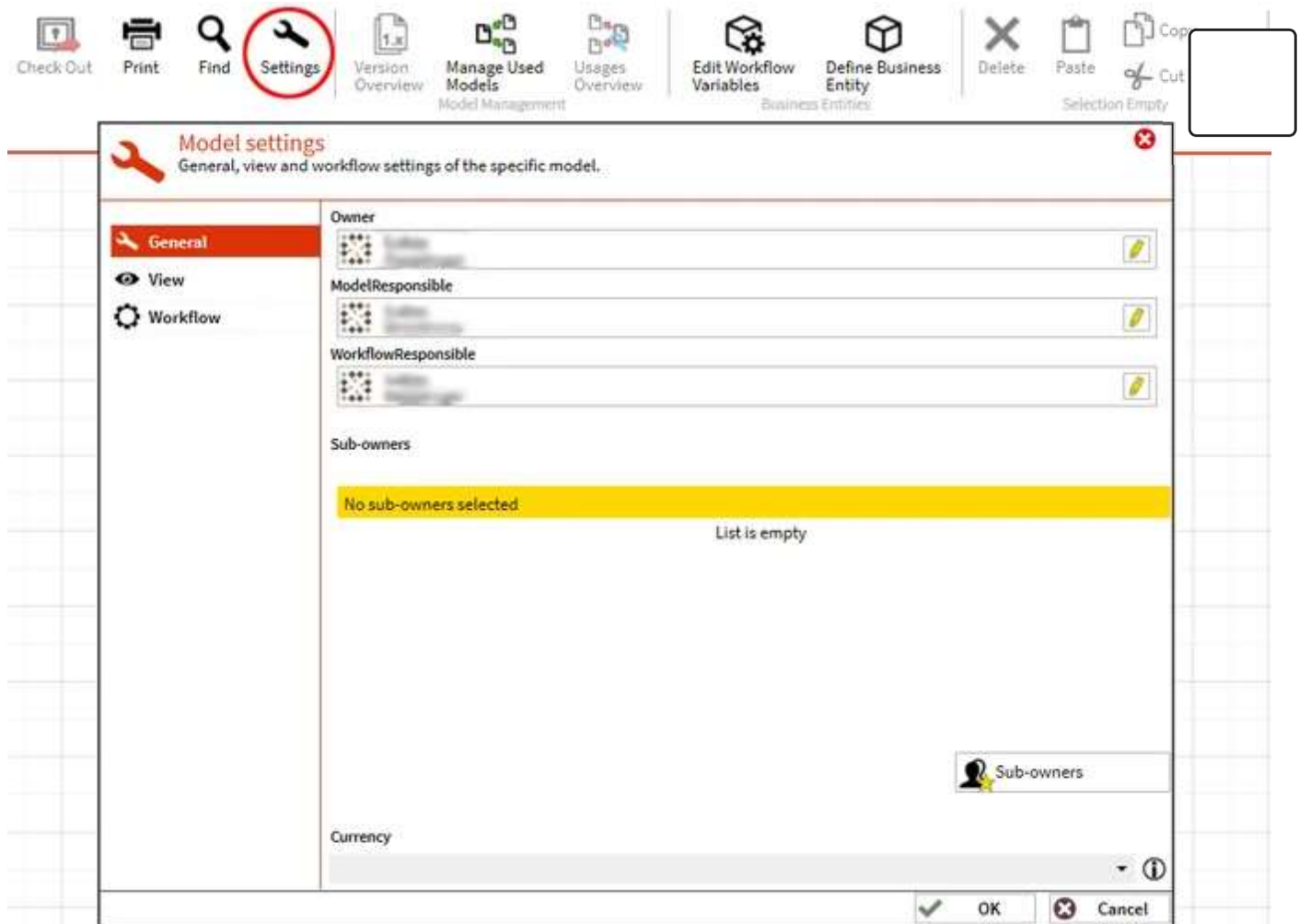
WorkflowResponsible:

Version:

Current: 1.00

Deployed:

or in the model **Settings**:



They all are also visible during an execution in the client as well as in the **Process Portal**, or in any model view:

Test Model

Test Model

Start

Task

End

Properties

Objective:

Version comment:

Meta-information

Id:

484bf3a3-51c6-4264-8994-29302c0f64

TrackingId:

2618557a-925e-4f8b-9b0a-584df77cf1

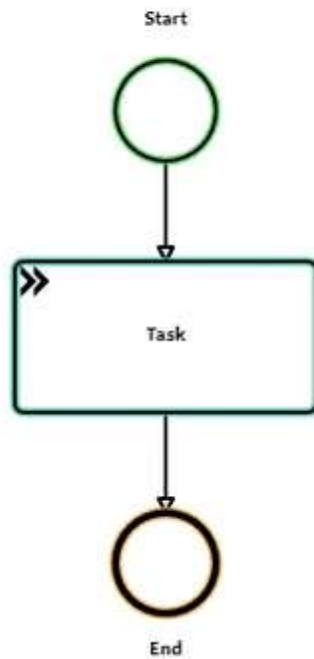
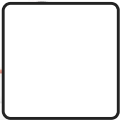
Settings:

Owner:

ModelResponsible:

WorkflowResponsible:

Minimap



**Process Model**

Name

Test Model

Print Preview

Send Link

History

Charts

Usages

Start Workflow

Properties

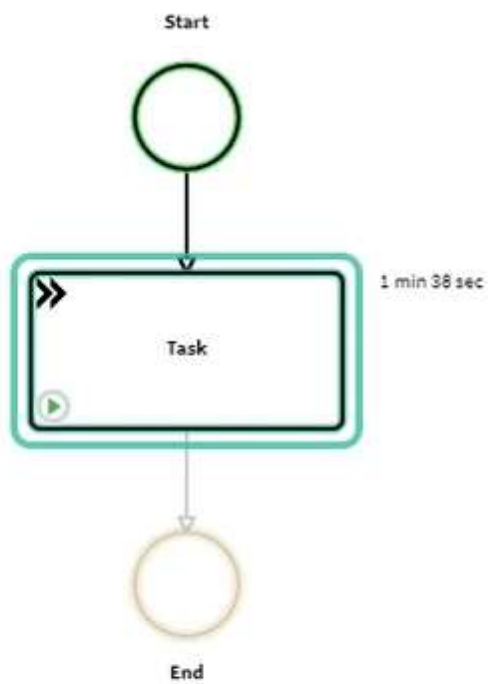
Comments

Model Owner

Model Responsible

Workflow Responsible

Analysis



Execution

Name

Test Model

Print Preview

Send Link

Translate

Log

Charts

Stop Workflow

Properties

Comments

Model Owner

[User Name]

Model Responsible

[User Name]

Workflow Responsible

[User Name]

Analysis

>

Process Model

>