

Quick Tutorial - Workflow Basics ▾



◀ Back to home

Connect SharePoint to FireStart

To start, you have to create a list in SharePoint and then the list needs to be mapped to a business entity in FireStart.

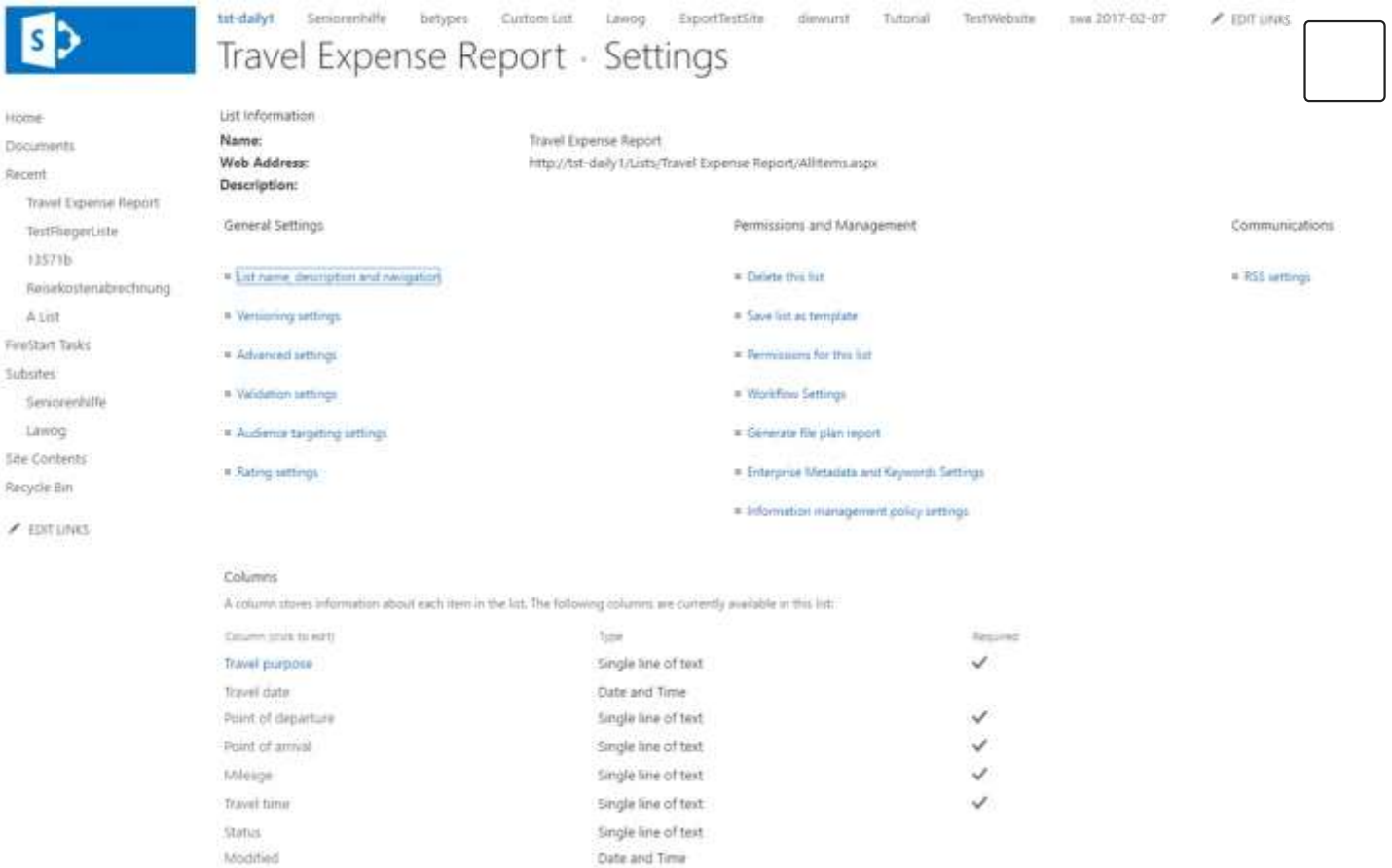
Create a Custom List for Travel Expense Reports

Create a new app (custom list) named **travel expense list** inside a SharePoint site collection. Note: The field title was renamed to “travel purpose”. Follow the steps below:

1. Select the **List** Ribbon on the Menu Bar and open the **List Settings**.
2. Select **Create Column**.
3. Create columns according to the following screenshot.

Field name - Field type - required

- Title/Travel purpose – Single line of text – yes
- Travel date – Date and Time – no
- Point of departure - Single line of text – yes
- Point of arrival - Single line of text – yes
- Mileage - Single line of text – yes
- Travel time - Single line of text – yes
- Status - Single line of text – no



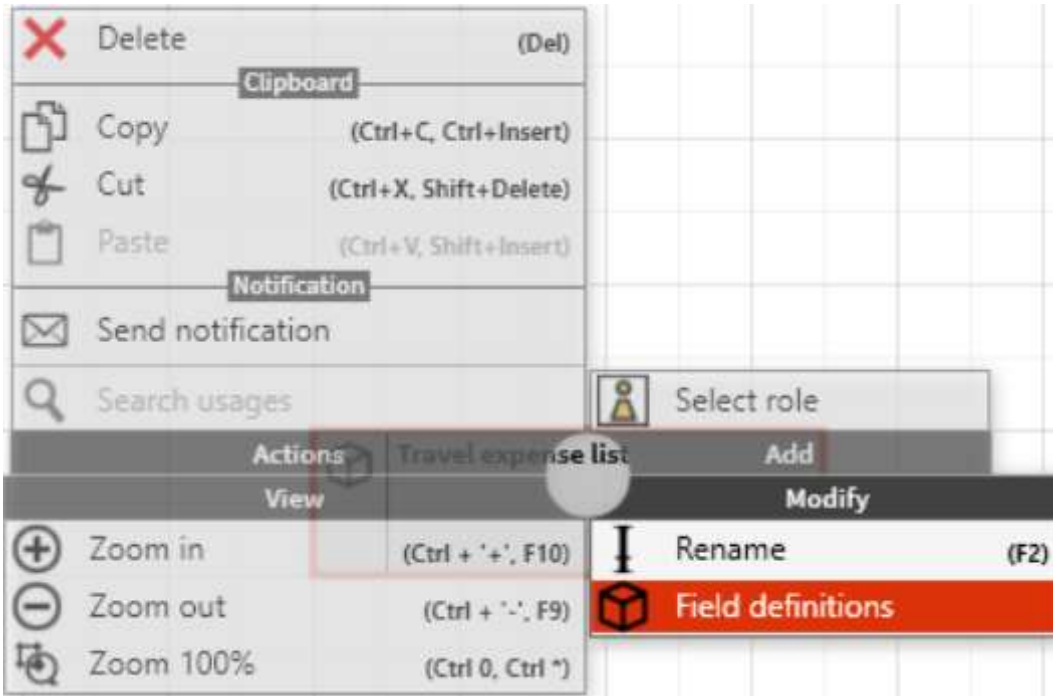
Select the list from the left navigation and copy the URL to your clipboard.
 e.g. <http://pro-demo/websites/tutorial/Lists/Travel Expense List/AllItems.aspx>

Create a Business Entity for SharePoint List

Select the BUSINESS ENTITY designer and create a new model by clicking **New Model** in the top ribbon menu **Main**.



Drag and drop a **Business entity element** on the canvas and name it Travel expense list.
 Right-click the business entity element and select **Field definitions**.



Select the **Mappings** tab and click **Add**.

Business entity definition

Here you can define the fields of this business entity which can be mapped with real data. Fields which are not mapped are workflow variables. Additionally, you can define views for complex data structures.

General / Fields | Mappings | Views

Search: _____

State	Server	List / Table	System type	Link usage
-------	--------	--------------	-------------	------------

+ Add | Edit | Delete | Reload | OK | Cancel

Select the **SharePoint 2013/2016/Online** adapter, enter the required information and paste the copied URL to your travel expense list. Click **Next**.

Drag and drop the required fields from the left to the right side or simply double-click the required fields on the left side to add them. Click **Finish** when done.

The screenshot shows the 'Define Mapping' window in FireStart. The window title is 'Define Mapping' with a subtitle 'You can map your business entities to external systems or documents.' The interface is divided into two main panes: 'Source' on the left and 'Target' on the right. A 'Change order' button is located between the panes. The 'Source' pane lists fields under several categories: Date (Travel date), DateTime (Created, Modified), Lookup (App Created By, App Modified By, Client Id, Created, Folder Child Count, Item Child Count, Modified, Sort Type), and Text (Mileage, Point of arrival, Point of departure, Status, Travel purpose, Travel time). The 'Target' pane lists fields under Date (Travel date) and Text (Created By, Mileage, Point of arrival, Point of departure, Status, Travel purpose, Travel time). Lines connect the 'Travel date' field in the Source to the 'Travel date' field in the Target. Additionally, five lines connect the 'Created', 'Modified', 'Folder Child Count', 'Item Child Count', and 'Sort Type' fields in the Source to the 'Created By', 'Mileage', 'Point of arrival', 'Point of departure', and 'Status' fields in the Target, respectively. Each connection line has a yellow square icon with a double-line symbol. At the bottom of the window, there is a toolbar with buttons: 'Show system fields' (checkbox), 'Auto-map', 'Generate all', 'Back', 'Next', 'Finish' (with a green checkmark), and 'Cancel' (with a red X).

You just created your first business entity mapping.

Business entity definition

Here you can define the fields of this business entity which can be mapped with real data. Fields which are not mapped are workflow variables. Additionally, you can define views for complex data structures.

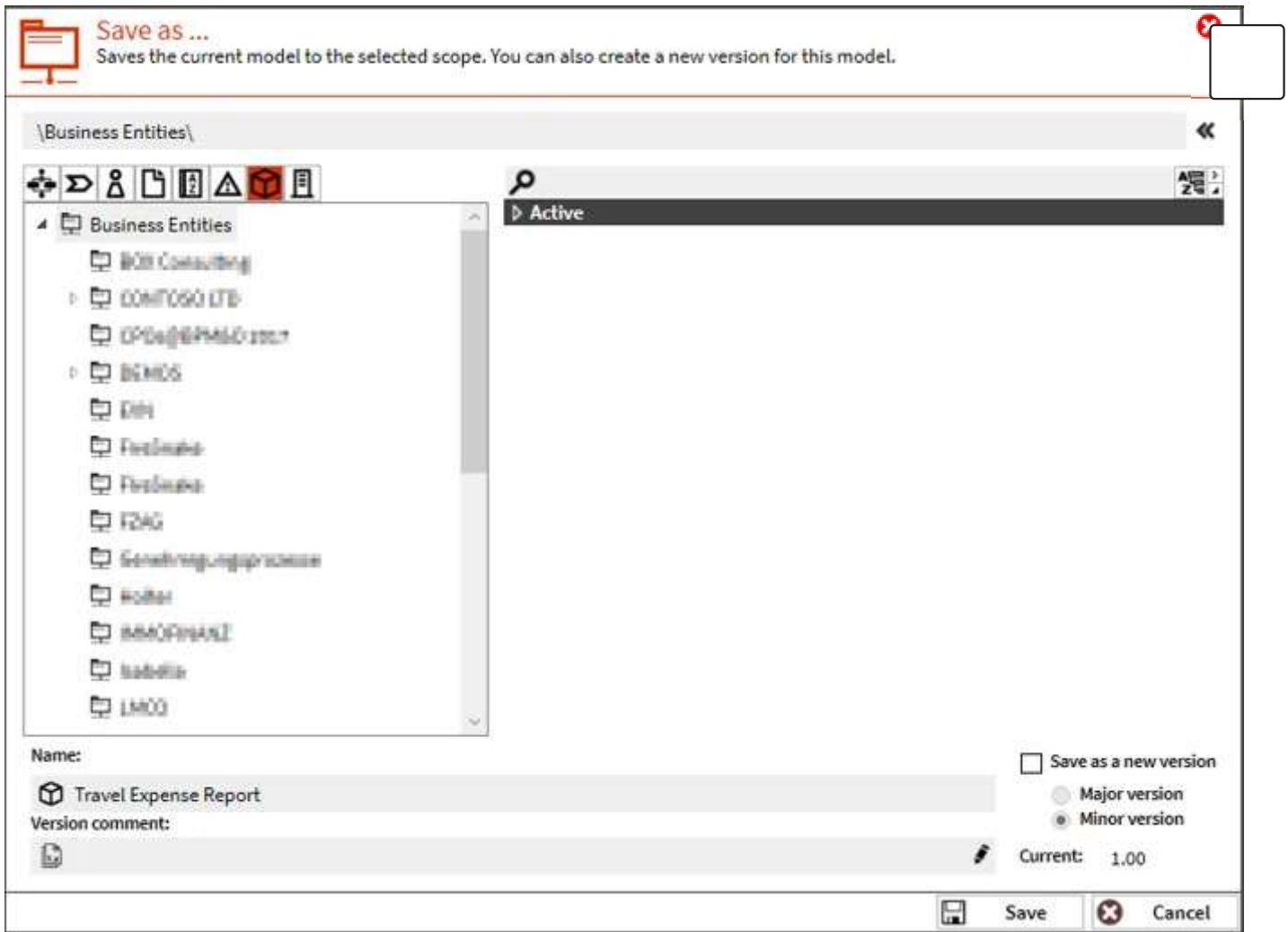
General / Fields / Mappings / Views

	State	Server	List / Table	System type	Link usage
Type: Sharepoint					
▶	Online	pro-demo	Web-URL: http://pro-demo/EN/Lis...	Sharepoint	Live

+ Add ✎ Edit ✕ Delete ↻ Reload ✓ OK ✕ Cancel

Click **OK** to close.

Select **Save** from the top ribbon menu **Main**, select a scope, give the model a name, and click **Save**.



Was this article helpful?

Yes

No

Related articles

[FireStart TaskList content type for SharePoint Online](#)

[Complete Task](#)

[Define Business Entity for Process](#)

[Sharepoint Online OAuth Migration](#)