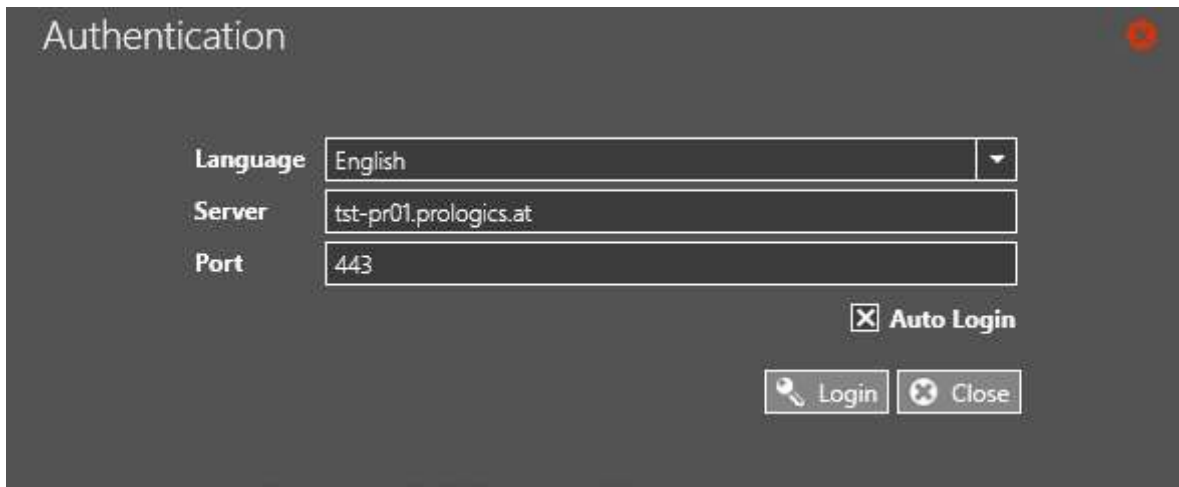


[← Back to home](#)

Invoice Verification - Introduction

In this tutorial, you will learn the basics of modeling a process. First, you will receive an introduction to the FireStart Client. After that, you will begin modeling your first process in FireStart with all its requirements. The process will be "Invoice Verification".

Start the FireStart client to see this dialog:



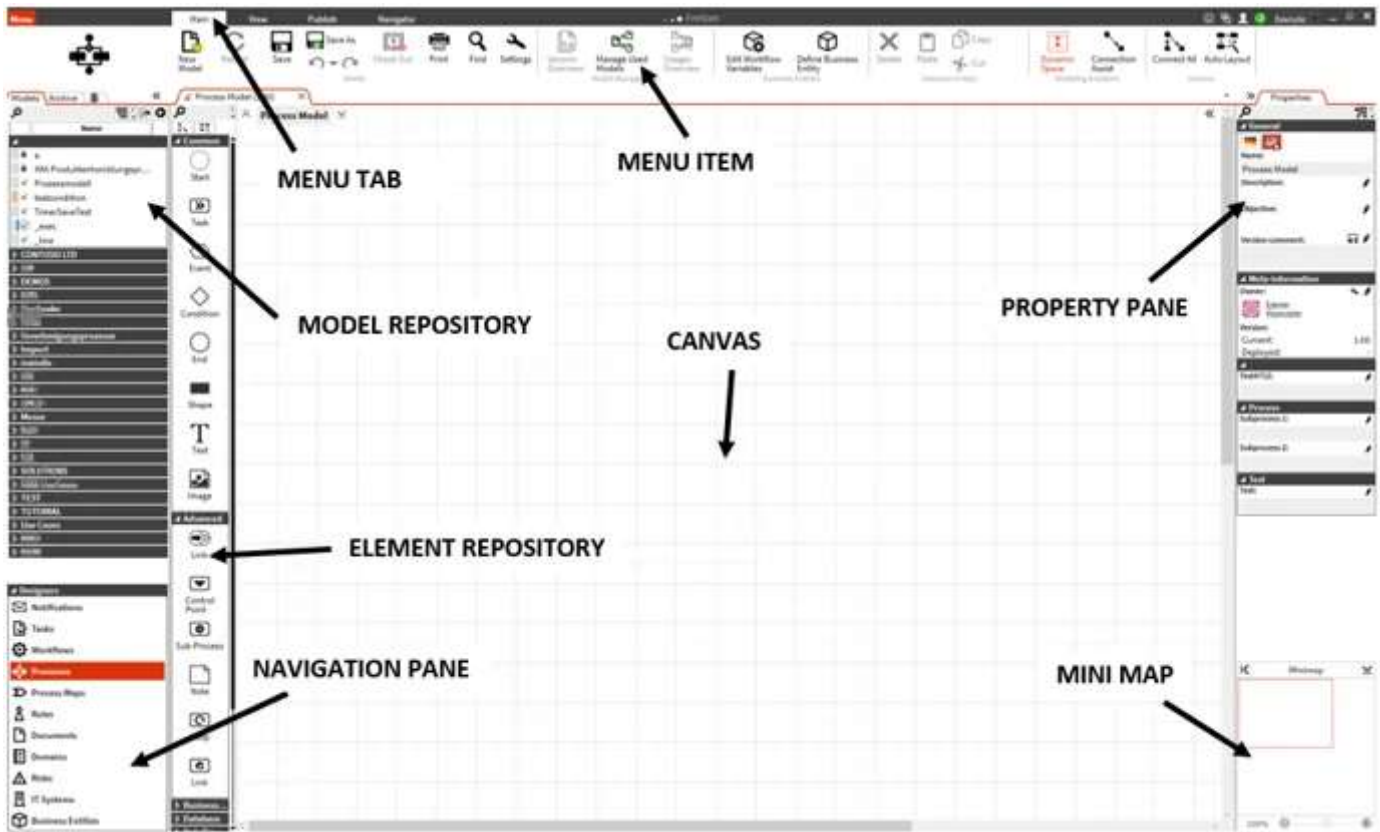
Enter the connection data of the server and click **Login**. Depending on the configured authentication type, you will be redirected to the corresponding login pages.

User Rights and Permissions:

User Rights in FireStart are based on the hierarchical system of your Active Directory and must be configured in order for users to be able to view and edit models and workflows. FireStart allows you to assign rights to individual users as well as entire Active Directory groups.

For a more detailed look at setting up and managing user rights and permission, see [Manage User Rights](#).

These are the main areas/sections of the FireStart Client:

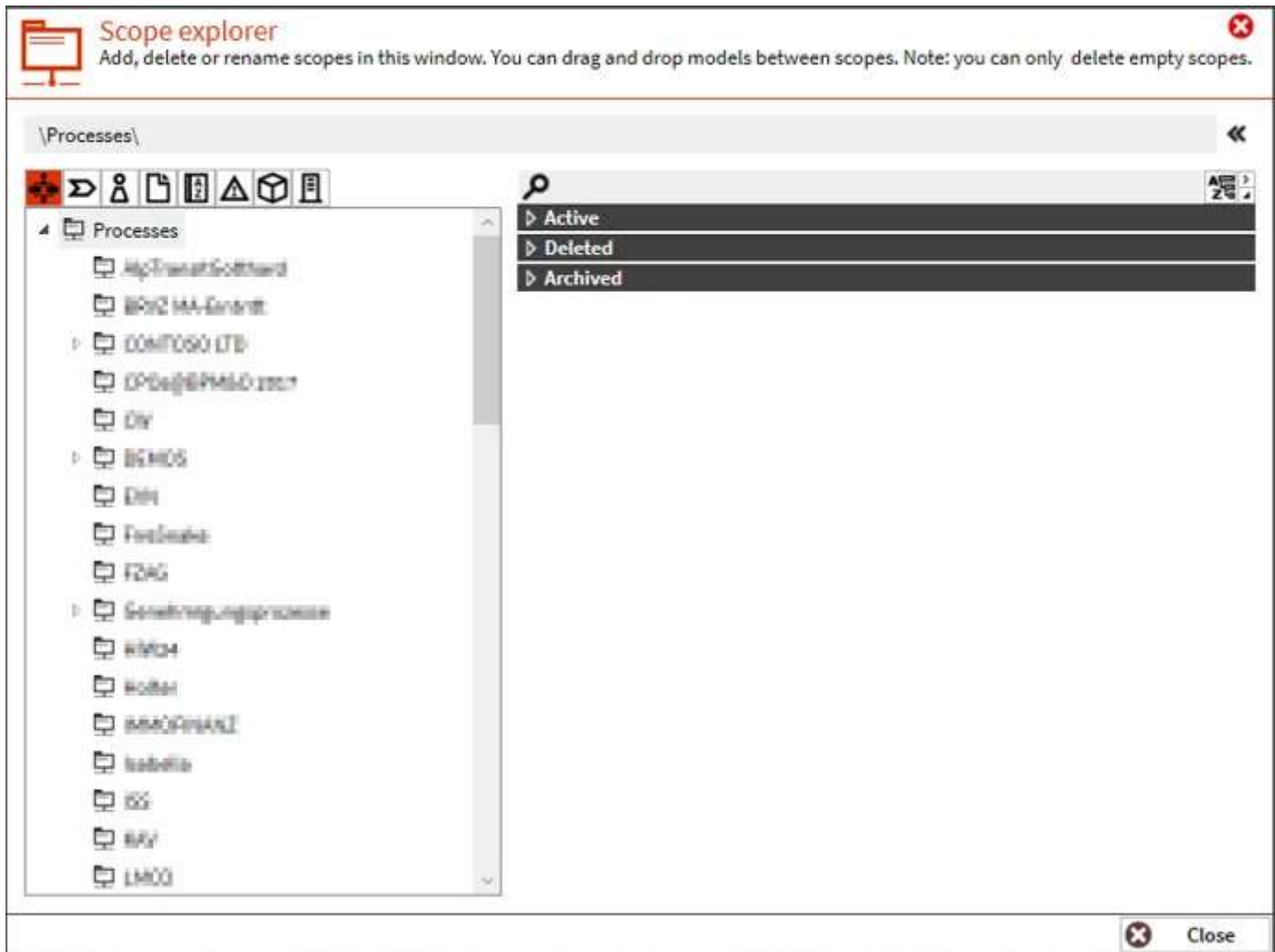


The navigation pane provides access to the particular designers in FireStart. For this tutorial, you will need the following designers: PROCESSES, ROLES, DOCUMENTS, and IT SYSTEMS.



Create a New Scope

Scopes are like folders which enable you to structure and organize your models. Independent from the designer, creating scopes always follows the exact same steps. When using **Save** for the first time in a model, the below save-dialog is displayed. This dialog will also be displayed when **Save as** is used. Additionally, you can access the scopes by right-clicking the model repository and selecting **Scope Explorer**. To create a new scope right-click the overlying scope and select **Add**. In this context menu, you will also find options to **Rename** or **Delete** scopes.



Caution: Deleted scopes cannot be restored from a paper bin!
Deleted scopes are irreversible!